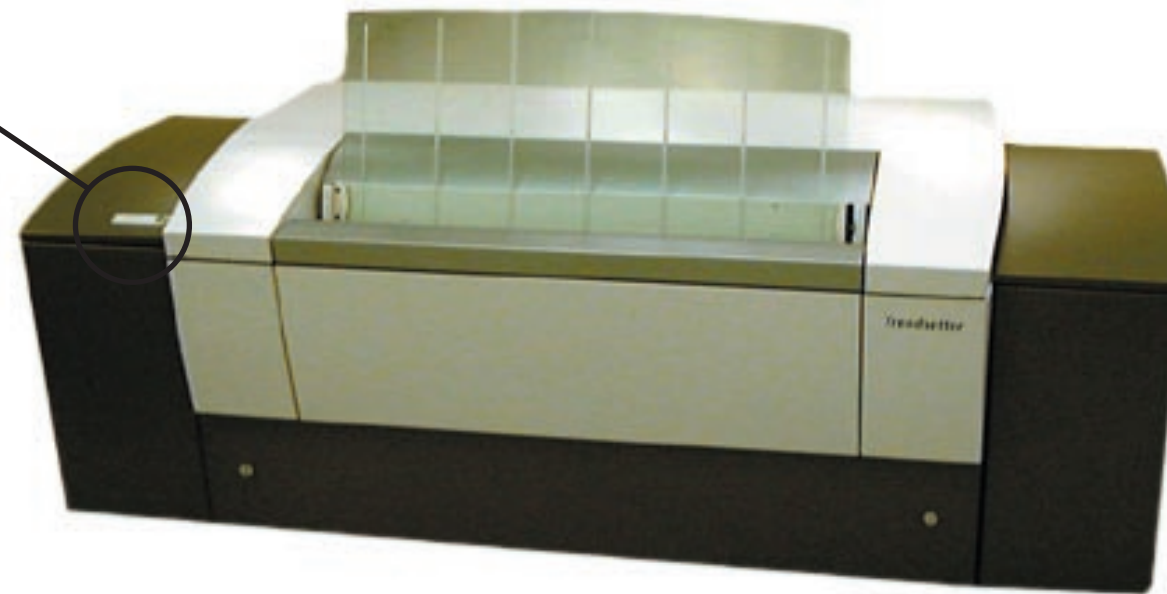



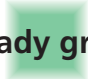



**Visual Quick Reference**  
English

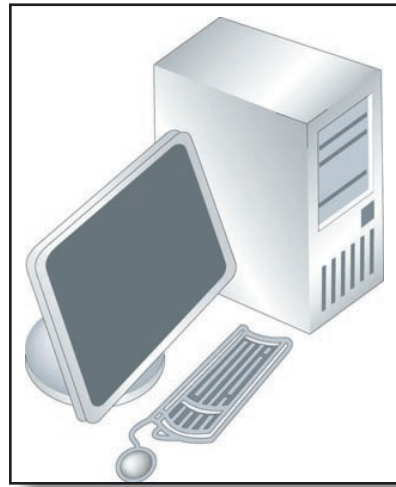
# Trendsetter<sup>®</sup> 400/800

Operator Interface lights

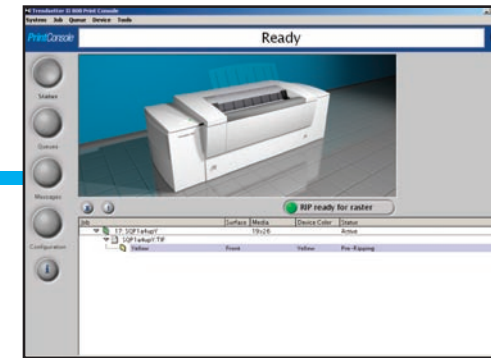
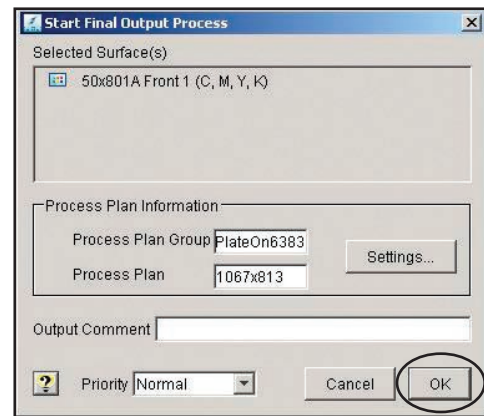


Operator Interface Lights		Operator Action
Imaging Light	Flashing green 	Wait—the device is imaging the plate.
Load Light	Steady green 	Place a plate on the load ramp. The green light stays on until the plate is unloaded.
Error Light	Flashing yellow 	An error has occurred and the job is suspended.

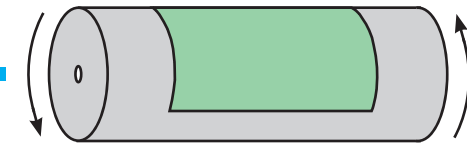
## Prinerger



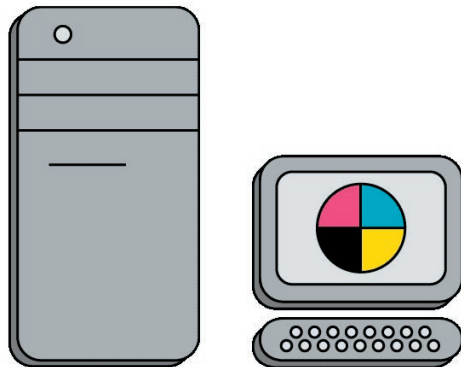
1 In Prinerger, click **OK** to submit the file.



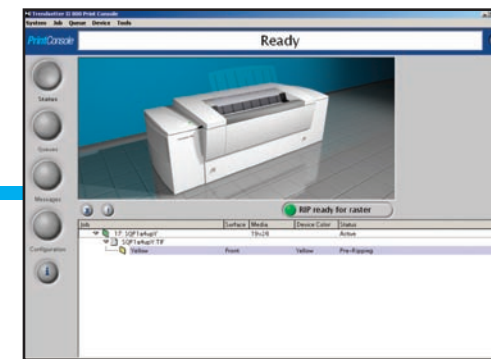
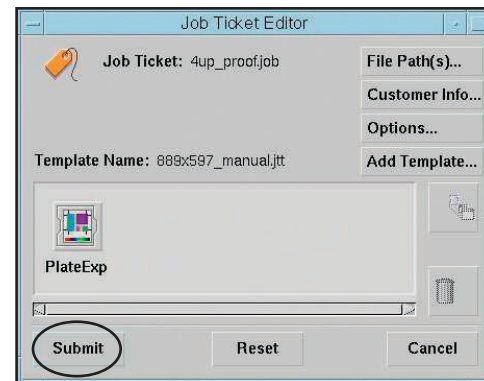
The output device receives the job in Print Console.



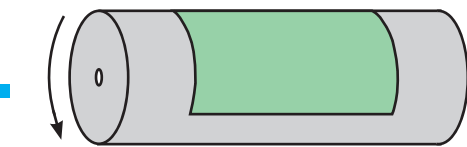
## Brisque



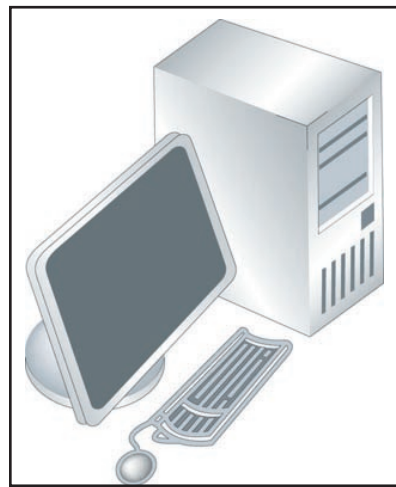
1 In Brisque, click **Submit** to submit the file.



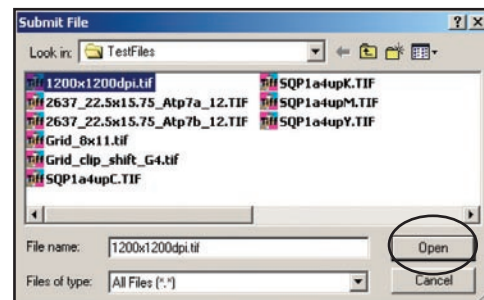
The output device receives the job in Print Console.



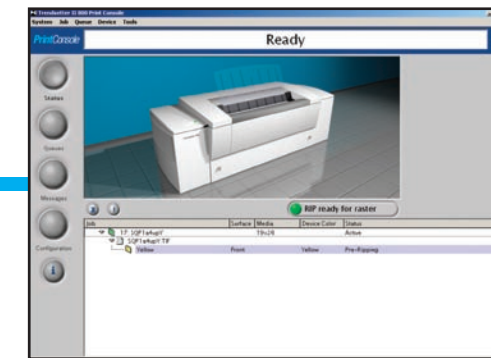
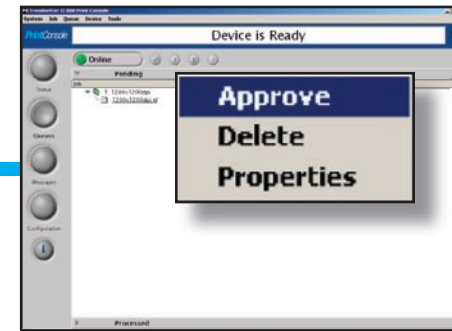
## TIFF Workflow



1 In Print Console, click **Open** to submit the file.



2 Right-click the job and select **Approve**.



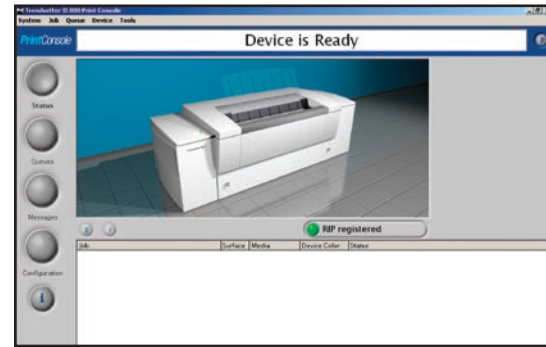
The output device receives the job.



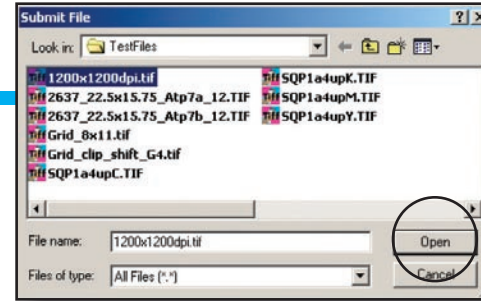


**CAUTION:** Wear protective gloves when handling plates.\*

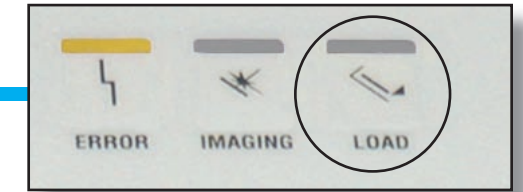
1 Ensure the device is ready.



2 In Print Console:  
a. Click **Open** to submit the file.



b. Ensure that the correct plate is available for loading.



The load light flashes green.

3 Remove slip sheet.



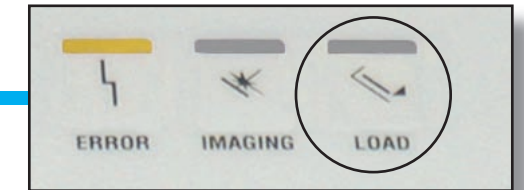
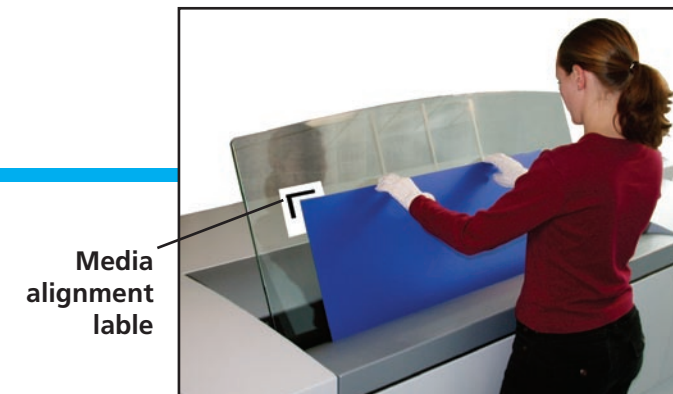
4 Position plate on the load ramp.



5 Lower the plate gently until it touches the registration pins.



6 Align the plate on the load ramp.



The load light flashes green.

7 Press the Start button.



The imaging light flashes green.

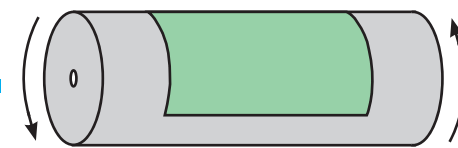


Plate imaging



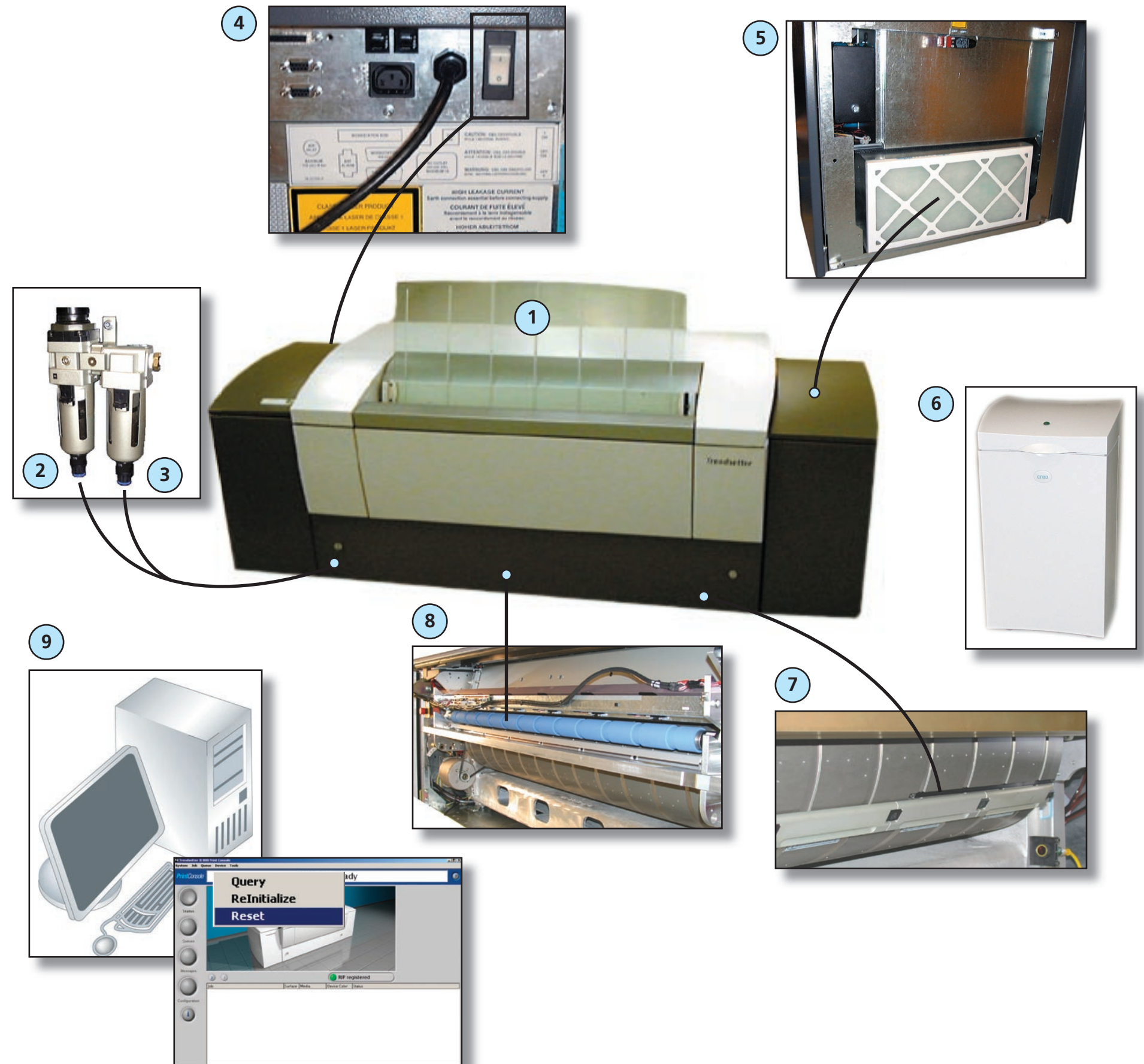
The load light glows steady green.

8 Unload the plate.



\* Refer to the *Operator Manual* for full details.

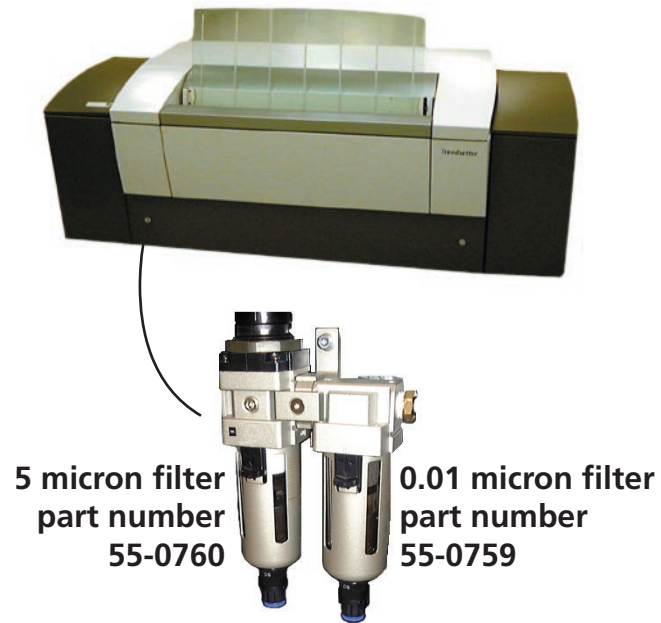
Operations				
Turn on the output device	4	These operations are required for some of the maintenance procedures below.		
Turn off the output device	4			
Reset the output device	9			
Maintenance	Work to Be Done	How Often	Date Work Completed	
Exterior surfaces	Clean	Weekly		
Load ramp	Clean			
Plate roller *	Clean	Monthly		
Edge detection strip *	Clean	Every three months		
Compressed air supply filters:				
5 micron filter *	Replace	Three months or as needed		
0.01 micron filter *	Replace			
Air intake filter *	Replace			
Universal Debris Removal Cabinet (UDRC) filter **	Replace	As needed	N/A	
* Procedures for these items are included in this visual quick reference guide.				
** Media dependent				
Note: This document is not intended as a substitute for the <i>Trendsetter 400/800 Operator Manual</i> . Refer to the operator manual for detailed procedures. Software may display differently depending on the version of Print Console in use.				





**WARNING:** Remove air pressure from the device before replacing an air filter.\*

## Replacing the 5 Micron Filter



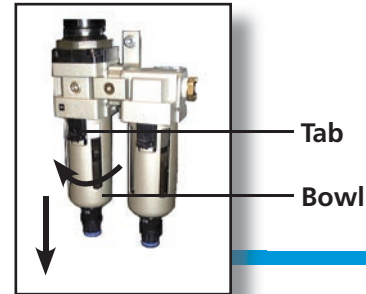
1 Disconnect the compressed air.



Air pressure drops to 0 psi.



2 Pull the filter tab down, rotate the bowl a quarter turn (either direction), and pull down.



3 Remove the old filter and install the new one.

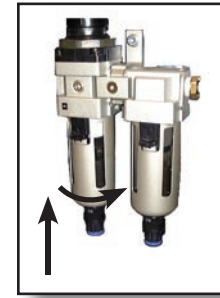


5 micron filter

4 Clean inside the bowl.

5 Replace the O-ring, if necessary.

6 Reattach the bowl.

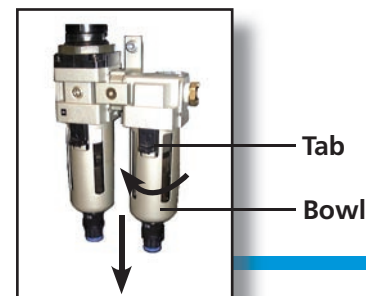


7 Turn on the compressed air.



## Replacing the 0.01 Micron Filter

2 Pull the filter tab down, rotate the bowl a quarter turn (either direction), and pull down.



3 Remove the old filter and install the new one.



0.01 micron filter

4 Clean inside the bowl.

5 Replace the O-ring, if necessary.

6 Reattach the bowl.



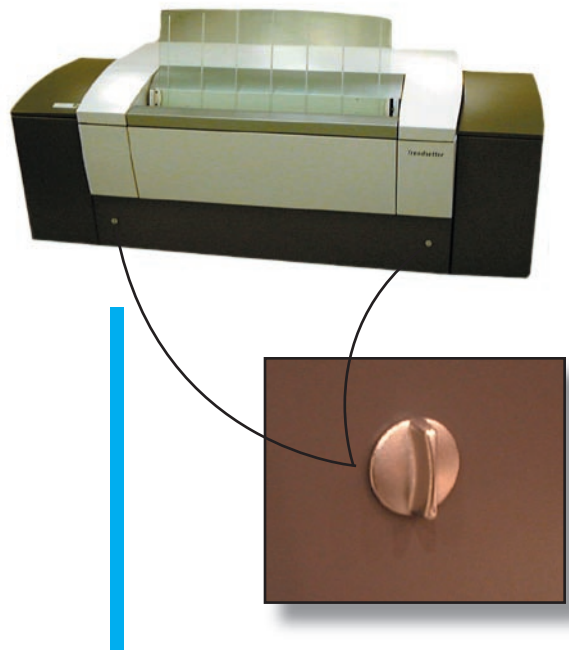
Air pressure rises to 80 psi.



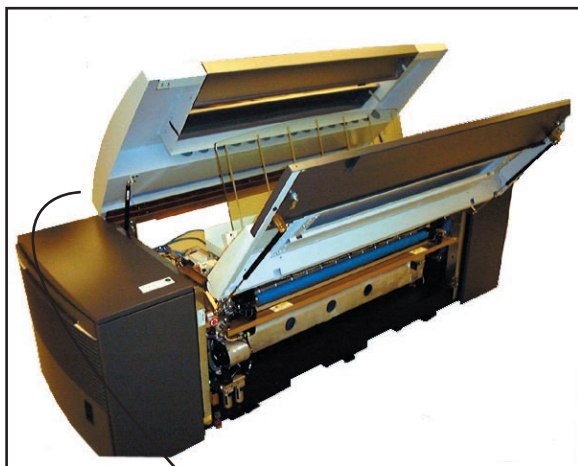
**WARNING:** Risk of electrical shock if liquids are allowed to run freely into the output device.\*

**CAUTION:** Be careful not to bump your head on the raised panel.\*

- 1 To open the front panel:
  - a. Rotate the two latches on the front panel to the vertical position (90° counterclockwise).



- b. Lift the front panel.



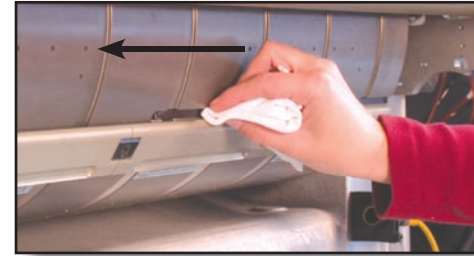
The top access panel opens by itself.

## Cleaning the Edge Detection Strip

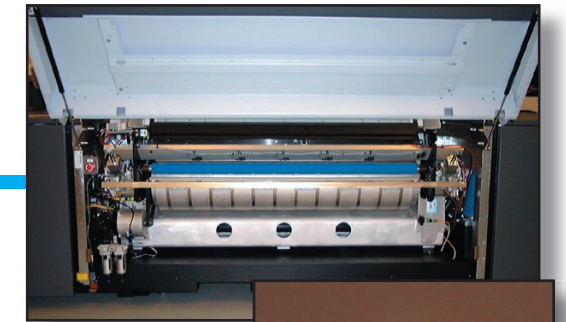
- 2 Rotate the drum to expose the edge detection strip.



- 3 Dampen a cloth with isopropanol and swipe it along the strip once, in one direction only.



- 4 To close the panels:
  - a. Pull down the front panel and turn the locking latches.



- b. Pull down the top panel and then push on the two corners to lock the internal latches.

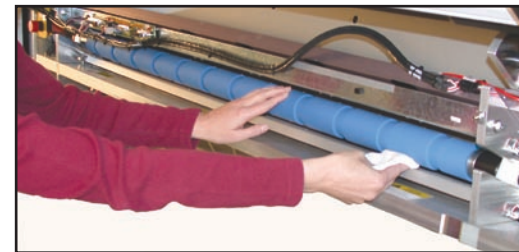


## Cleaning the Plate Roller

- 2 Locate the blue plate roller:



- 3 Dampen a lint-free cloth with water, and slide the cloth over the plate roller.





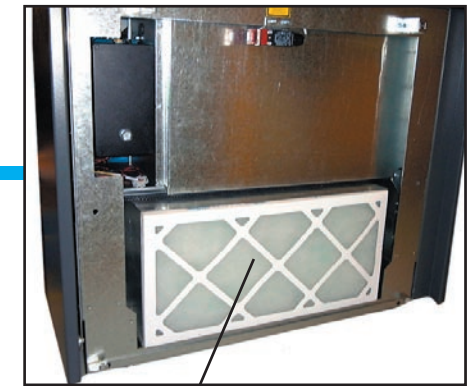
- 1 Remove the right-end access panel:
  - a. Use a flathead screwdriver to rotate both screws 90° counterclockwise.



- b. Tilt the panel back and lift it off its locating pins.



- 2 Remove the old air intake filter from the frame.



Air intake filter

- 3 Clean the air intake filter frame.

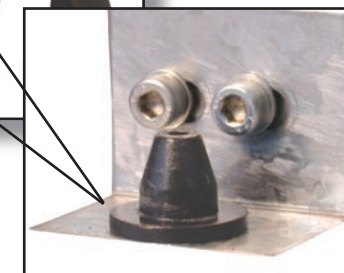


- 4 Install the new air intake filter.



Airflow arrows point inward.

- 5 Replace the right-end access panel:
  - a. Lift the panel and lower it onto the locating pins.



Locating pin

- b. Use a flathead screwdriver to rotate both screws 90° clockwise to secure the panel.







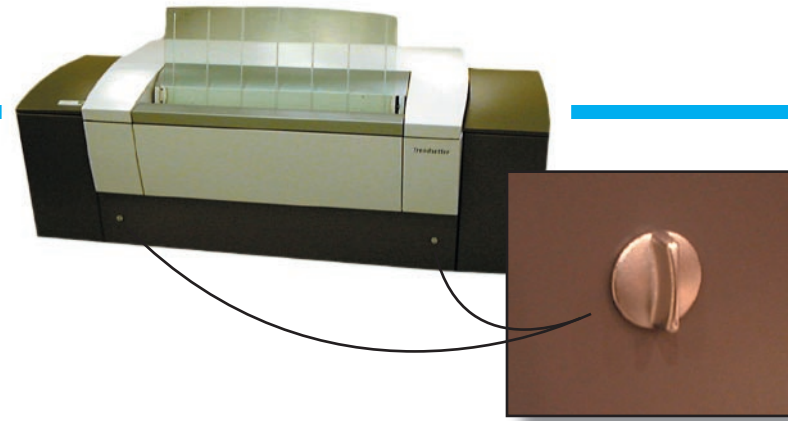
**CAUTION:** Wear protective gloves when handling plates.\*

**CAUTION:** If you have an implanted cardiac pacemaker, stay more than 7 cm away from the magnetic clamps.\*

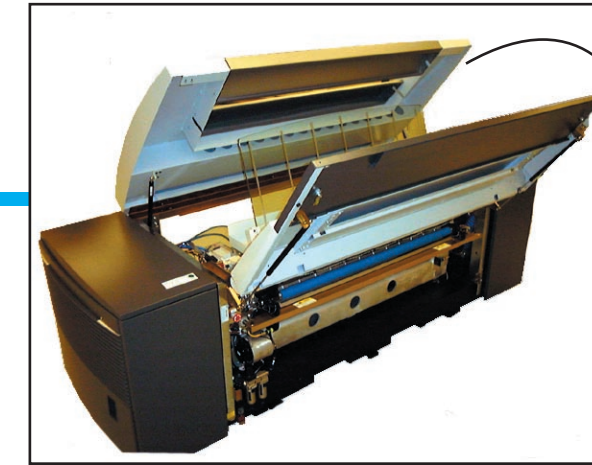
1 The device suspends activity.



2 Open the front panel:  
a. Rotate the two latches on the front panel to the vertical position (90° counterclockwise).



b. Lift the front panel.

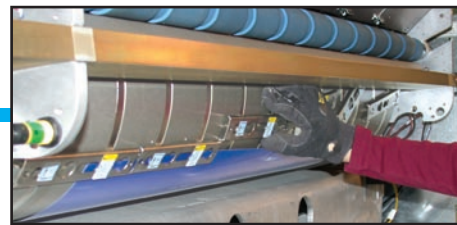


The top access panel opens by itself.

3 Rotate the drum to expose the trailing-edge clamps.



4 Slide the trailing-edge clamps off the plate.



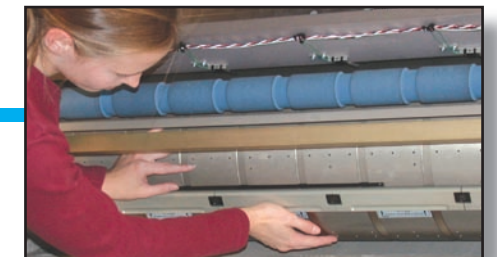
5 Fold over the corners of the plate.



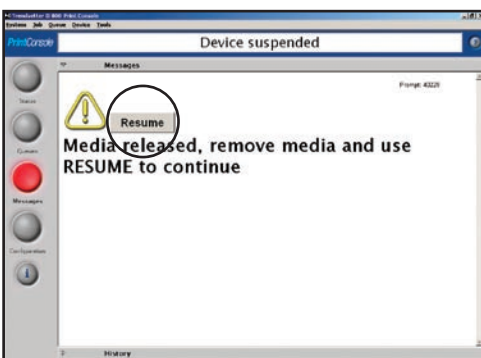
6 Press the leading-edge clamps to free the plate.



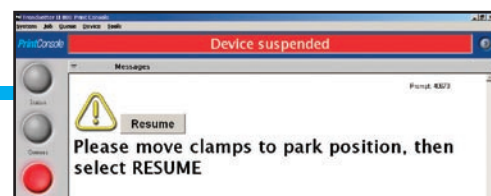
7 Clean out any debris left behind.



8 In Print Console, click **Resume**.



9 Reposition the trailing-edge clamps:  
a. Align the trailing-edge clamps with the leading-edge clamps.



b. Ensure that the S or N (magnetic polarity) on each clamp matches the S or N label on the drum.



10 Close the front panel, then close the top panel.

11 In Print Console, click **Resume**.

